

# DECOCLAY

INTERIOR & EXTERIOR CLAY CLADDING



**EURO PRATIK**  
An Opus of Products

**DECOCLAY** is an advanced decorative wall cladding and insulation material for interiors and exteriors.

Made from natural soil and stone powder, it uses "Molecule Modified Inorganic Composite Material" technology to ensure eco-friendliness, low carbon footprint, and recyclability.

Panel size 1200x600mm & so depending on aesthetics like Cut-Stone, Travertine, Bricks, Weaving, Knits & more ...



**DECOCLAY**  
INTERIOR & EXTERIOR CLAY CLADDING



**CL-01**

**600mm x 1200mm**



**CL-02**

**600mm x 1200mm**



**CL-03**

**600mm x 1200mm**

**DECOCLAY**  
INTERIOR & EXTERIOR CLAY CLADDING

**EURO PRATIK**  
An Opus of Products

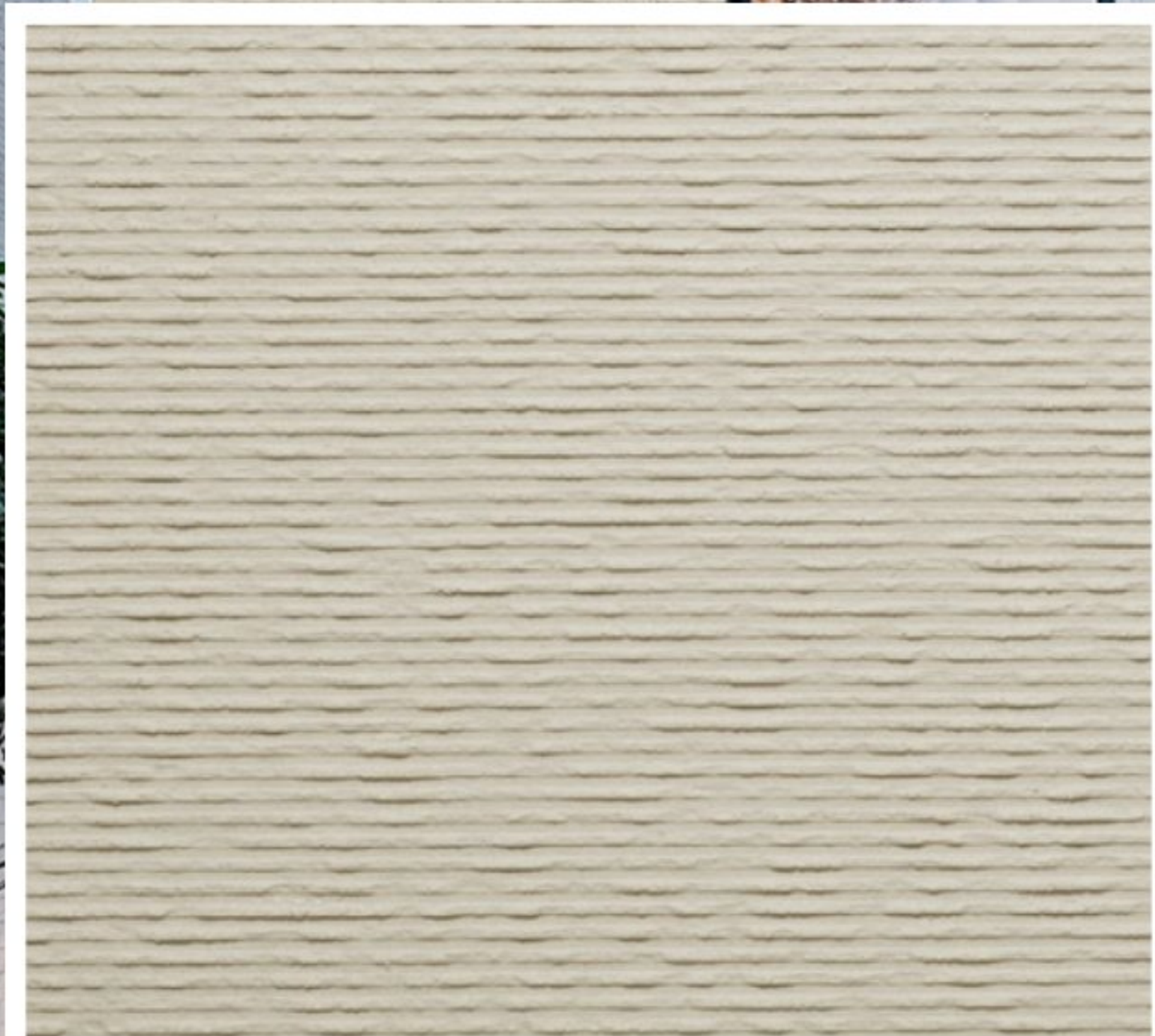


**CL-04**

**600mm x 1200mm**

**DECOCLAY**  
INTERIOR & EXTERIOR CLAY CLADDING

**EURO PRATIK**  
An Opus of Products

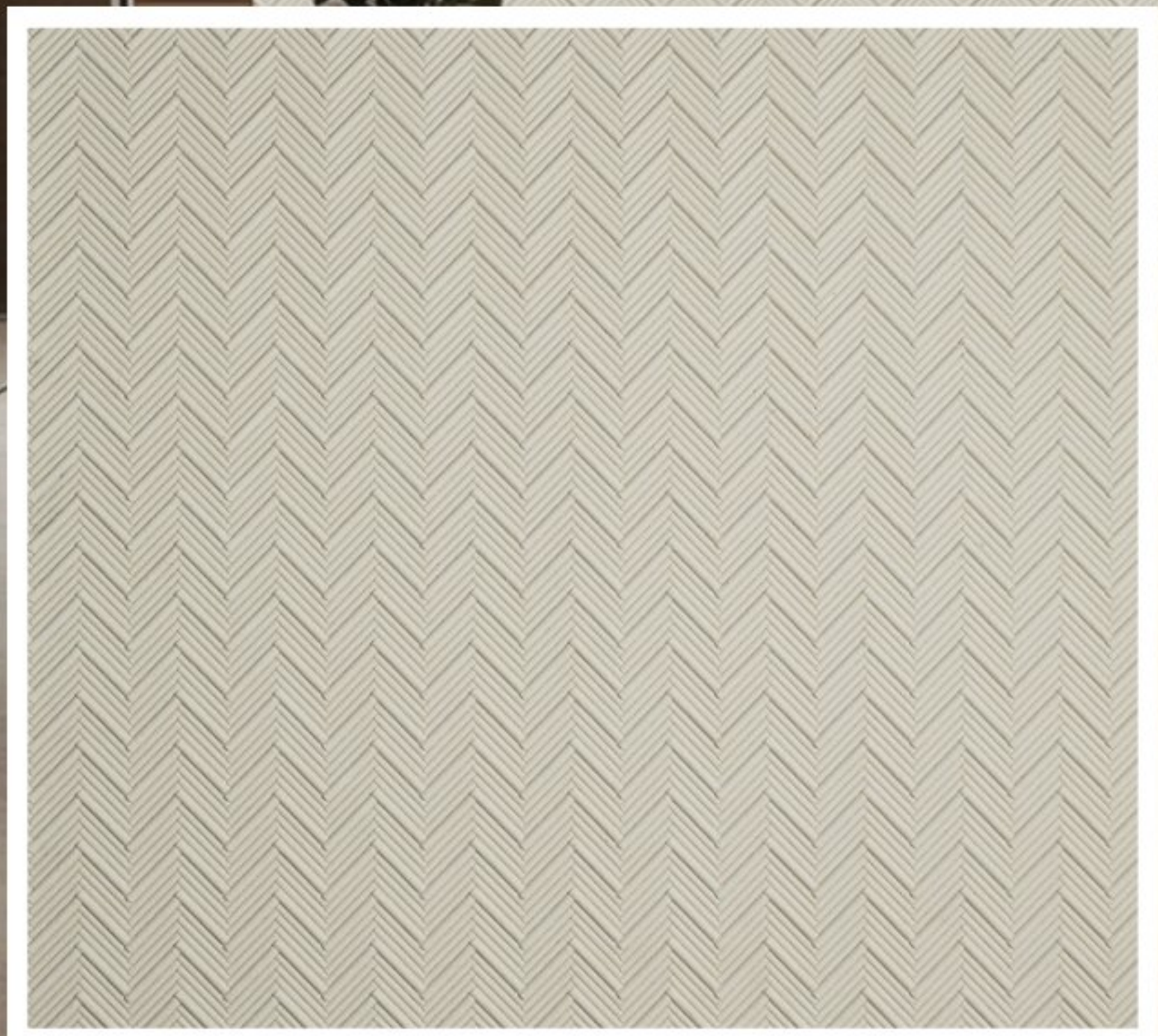
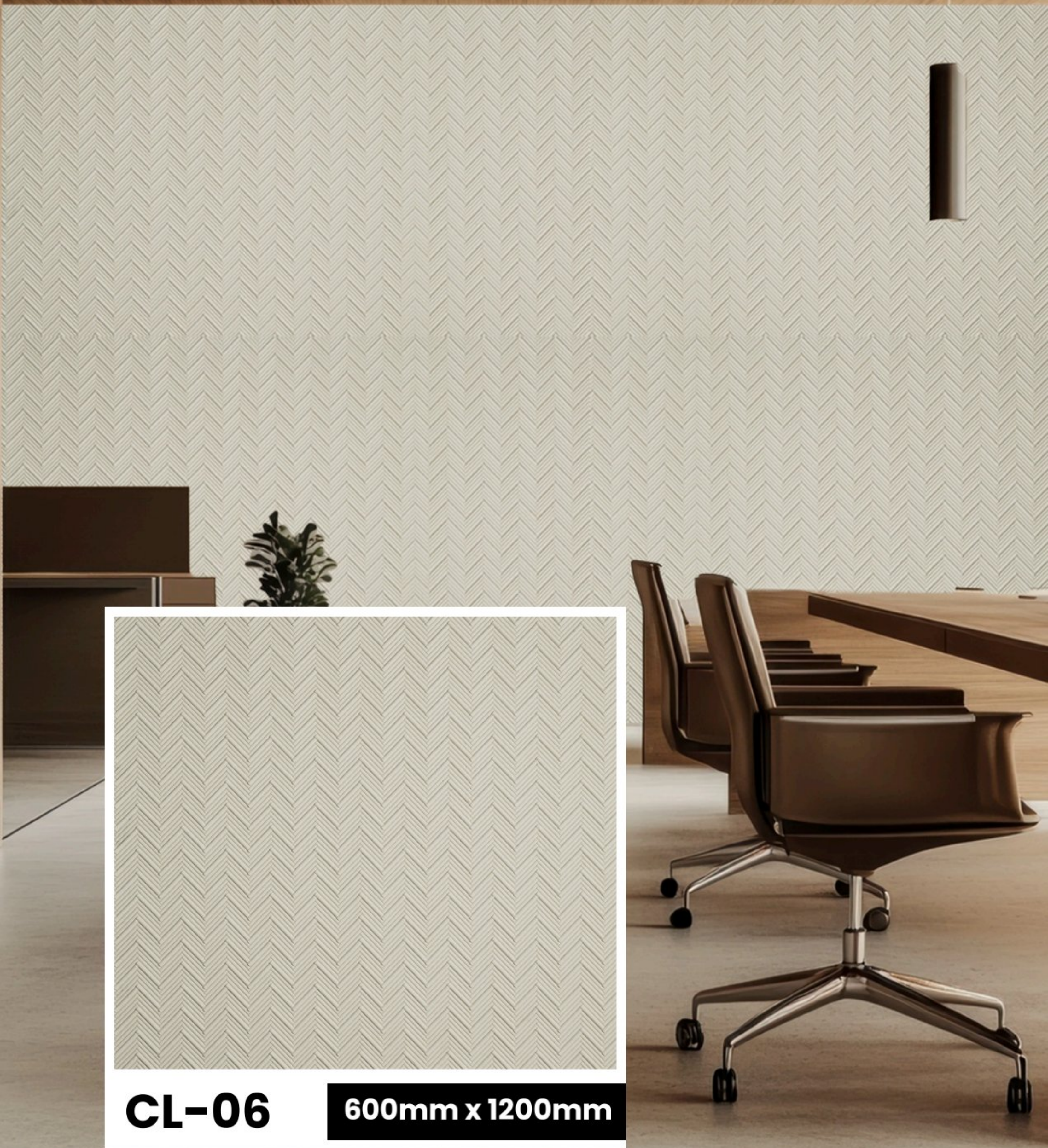


**CL-05**

**600mm x 1200mm**

**DECOCLAY**  
INTERIOR & EXTERIOR CLAY CLADDING

**EURO PRATIK**  
An Opus of Products



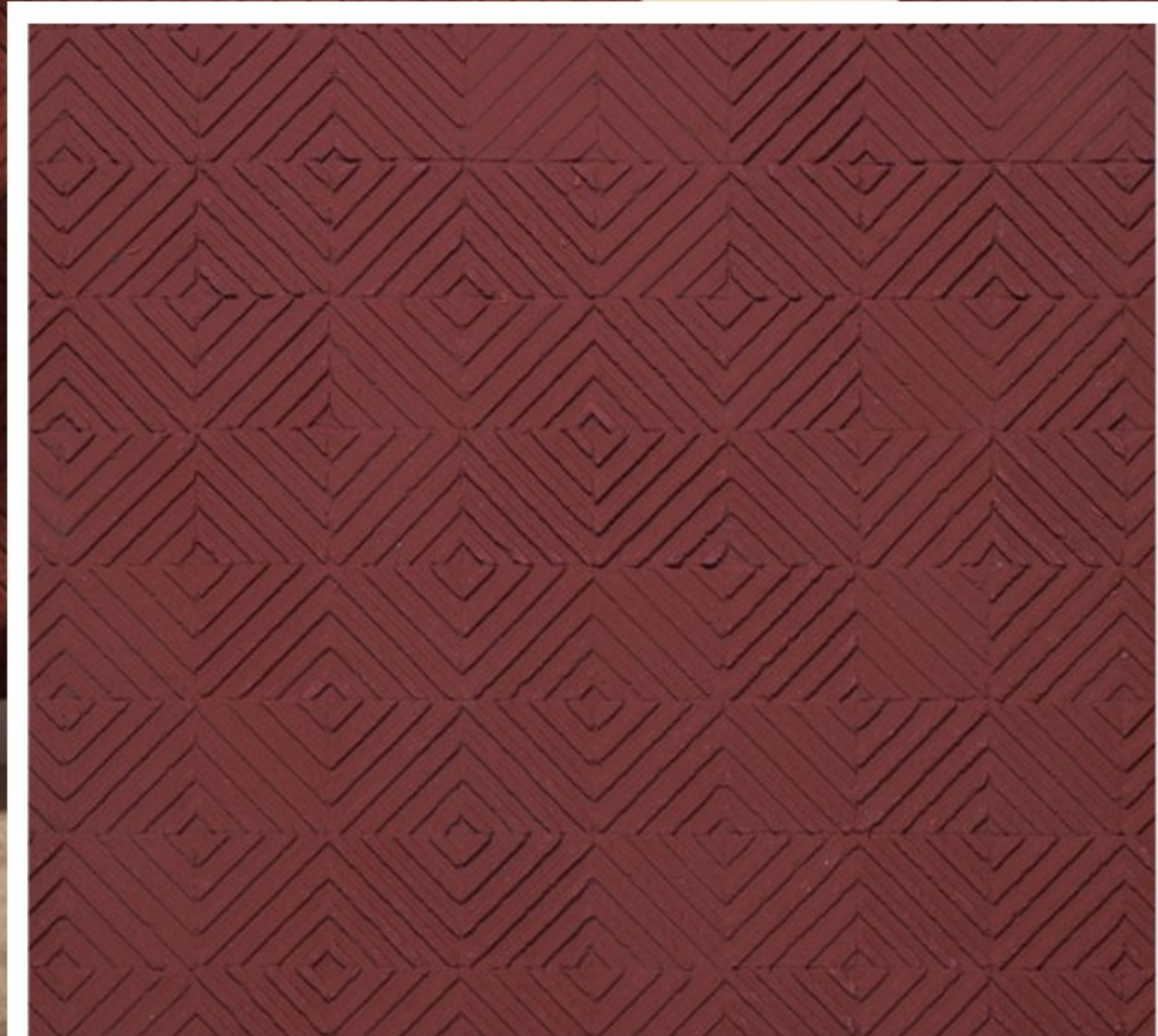
**CL-06**

**600mm x 1200mm**



**CL-07**

**600mm x 1200mm**



**CL-08**

**600mm x 1200mm**



**CL-09**

**590mm x 1190mm**



**CL-10**

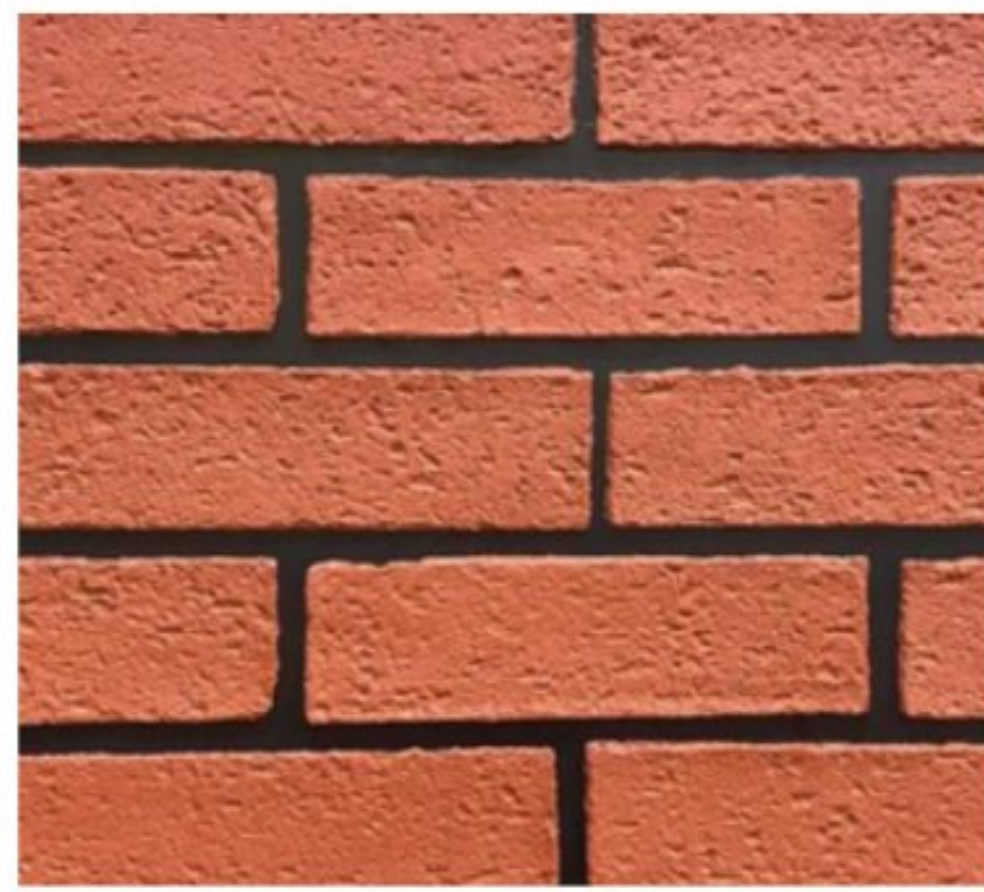
**590mm x 1190mm**





**CL-11**

60mm x 225mm



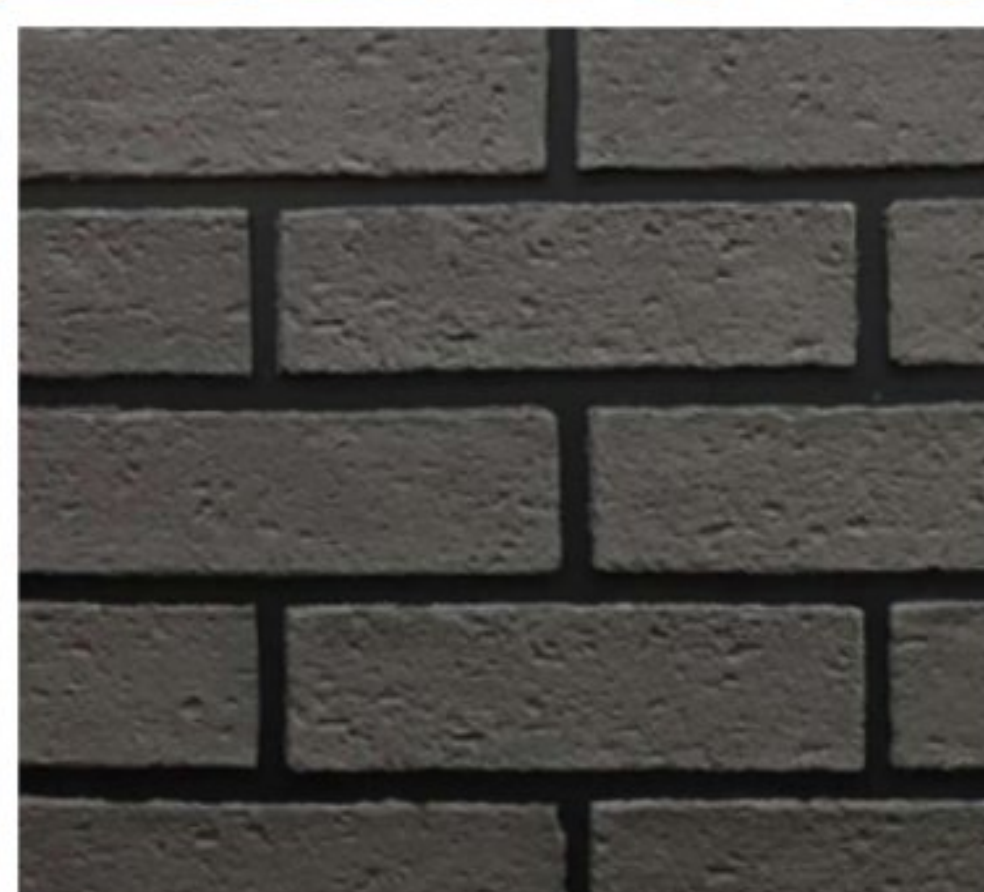
**CL-12**

60mm x 225mm



**CL-13**

60mm x 225mm



**CL-14**

60mm x 225mm



# Installation Guide

## 1. Proper Storage

Tools: Protective covering

When storing your DecoClay, it's crucial to follow these guidelines to prevent damage:

- Do not store DecoClay boxes vertically to avoid corner damaging.
- Always store horizontally, ideally flat to the surface and in a covered space.
- If possible, place a protective sheet over the DecoClay boxes to shield them from any kind of physical damage.

## 2. Surface Preparation

Tools: water level

Ensure that the surface is properly prepared for installation:

- DecoClay sheets can be installed on any plaster wall directly or on any other smooth partitions.
- Verify the surface is clean, dry-free from any seepages, even and ready for the next step.

For uneven surfaces, make necessary adjustments.

## 3. Unboxing

Tools: Utility knife or box cutter

Before starting the installation, carefully unbox the DecoClay sheets:

- Open the packaging fully throughout the length.
- Avoid opening box from the sides as it may damage the sheets.
- Lift the sheets gently from the box, without sliding it out, to prevent physical damage.

#### **4. Precision Cutting**

Tools: Cutting machine, Diamond cutting Disc blade, brown polish paper.

- Use a Diamond cutting Disc blade for precise cutting. Ensure the blade is sharp and not worn out, as dull blades can damage the sheet.
- Measure and cut the sheets accurately based on your installation needs.
- After cutting, use brown polish paper to smoothen and clean the edges.

#### **5. Fixing DecoClay sheets on plastered wall**

Adhesive recommendations – MYK Laticrete 335 super flex

Tools: Exterior grade tile adhesive, water level, nails.

- Lay the sheets on the floor and arrange them in the desired design or pattern before applying them to the wall. This helps ensure proper alignment and a cohesive look during installation.
- If needed, mark guide lines on the wall to ensure precise alignment and accuracy during installation.
- Prepare the exterior-grade tile adhesive according to the instructions on the packaging. Once ready, apply the adhesive generously on both, the surface and the back of the sheets to ensure a strong, lasting bond.
- Carefully fix the sheets one by one onto the surface, following the guide lines you've marked.
- Use a nail gun to secure the sheets if required

#### **6. Fixing DecoClay sheets on any smooth partitions or finished wall**

Plywood, Gypsum sheet, Fiber cement board, Tile, Glass, ACP sheet and Painted wall

Tools: Decoclay adhesive, water level, nails.

Decoclay adhesive – Setting time: 60 minutes, Coverage  
5 kg jar: approx. 70 sqft

- Lay the sheets on the floor and arrange them in the desired design or pattern before applying them to the wall. This helps ensure proper alignment and a cohesive look during installation.
- If needed, mark guide lines on the wall to ensure precise alignment and accuracy during installation.
- Apply the Decoclay adhesive generously on both, the surface and the back of the sheets to ensure a strong, lasting bond.
- Carefully fix the sheets one by one onto the surface, following the guide lines you've marked.
- Use a nail gun to secure the sheets if required

## 7. Finishing

Tools: Grout – cement, adhesive, epoxy based and wall paint

- Apply grout to fill the gaps. Once the grout is half-dry, scrape off any excess.
- If any adhesive seeps out, touch up the area with paint of the same color.
- If needed, you can paint the clay sheets with water-based color on the surface to achieve the desired shade.
- Apply water based PU coat to protect the finish of Decoclay sheets.

**Note : Shade variation is a natural part of the aesthetic. DecoClay sheets are made from natural, unfired clay. Variations in shade occur naturally due to differences in drying time during the formation of each sheet.**

# Material Properties

- Flexible** : Bends upto up to 10 inches diameters
- Thin & Lightweight** : 2-4 mm thick, weighs 3-6 kg/m<sup>2</sup>.
- Self Cleansing** : With rainwater and Dust repellent.
- Fire Proof Class A material** : A2 classified.
- Freeze thaw test passes** : Upto 100 cycle, -30% to 50'c ,
- Seismic & Crack Resistance** : Flexible, Soft textured, good Ductility ,
  
- Durability** : Accelerated aging test last over 2000-3500 hours, equivalent to 50 years out -door.
  
- Breathable Insulation** : Once installed, under a pressure of 0.3 MPa, surface prevents water ingress while allowing vapour to escape.



**Installation  
video**

✉ info@europatik.

🌐 www.europatik.com

**Follow us on**



Quick  
Installation



Durability  
& Strength



Environment  
Friendly



Anti  
Fungal



Fire  
Resistant



Flexible



Water  
Proof



Borer  
Proof



Termite  
Proof

**DECOCLAY**  
INTERIOR & EXTERIOR CLAY CLADDING